

**CHILD
CRISIS
CENTER
OF EL PASO**



years



childcrisiselp.org 915-562-7955



2009-2010 Annual Report

Protecting our Children, Preserving our Future



OUR MISSION

The Child Crisis Center of El Paso protects children ages newborn through 13 years from abuse and neglect by providing emergency shelter, family support services and family education and prevention services.

OUR VISION

The Child Crisis Center will eliminate child abuse and neglect by being the community leader on issues and concerns regarding the protection of children so that they can grow in a healthy, safe and positive family environment, thereby enriching their future.

OUR VALUES

In order to achieve our mission and pursue our vision, the Child Crisis Center values and holds dear:

- The children we are charged with*
- Our clients*
- Our staff*
- Ethical values, honesty, morality and the law*
- Our supporters and the community*



Table of Contents

Executive Director's Letter	p. 4
President's Letter	p. 5
Board of Directors	p. 6
Organizational Chart	p. 7
Programs	p. 8
Children's Shelter and Circle of Love Crisis Nursery	p. 8
Family Education Programs	p. 10
No- Kidding	p. 10
STEP	p. 11
Family Services	p. 13
Community Resources	p. 14
Staffing and Human Resources	p. 15
Financials	p. 16
Fund Development	p. 18
Discovery Shop	P. 19
Sponsors and contributors	p. 20



A LETTER FROM THE EXECUTIVE DIRECTOR

Dear Stakeholder,

In 2010, we celebrated 30 years of protecting children from child abuse and neglect in our community. What began as a small, all-volunteer driven crisis nursery operating in a three bedroom home, has become a dynamic, multi-program child abuse prevention agency that annually assists over 6,000 children and families in our community. The Child Crisis Center of El Paso is the primary child abuse prevention agency for children in El Paso and we are proud of the work we do every day.

When nation was stricken by an economic recession, the non-profit community was particularly hard hit as several local agencies either closed up or reduced programs and services. It is a sad reality that when economic hard times hit, the greatest victims are the low-income and destitute people. They are turning to a service sector that is stricken by reduced levels of funding and have found that obtaining essential services can be difficult at best during these trying times.

I am happy to say that while we felt the pains of an economic crisis, the Child Crisis Center had positioned itself financially, administratively and programmatically to endure the most difficult period of the recession. The Child Crisis Center Foundation provided us with funding during a period when our expenses were exceeding our revenues. CCCEP planned carefully and identified the programs that were absolutely necessary; succeeded in obtaining new sources of funding; strategically developed opportunities and implemented new programs that were fundable; and we eliminated programming that was not a mission fit and non-sustainable under the current economic conditions.

Long ago we identified that the changes at Ft. Bliss and the consequences of war would lead to military families needing supportive services. We planned for this eventuality and today, we are proud to be among the leading community agencies that provide direct support to military families in need. In 2006, less than 2% of the children we served came from military families. Presently, it is not uncommon to see 45% to 50% of the children residing in our center coming from the military community.

I am proud to continue to lead the efforts of the professional staff and volunteers who are the Child Crisis Center of El Paso. As you examine this annual report, I am sure you will see that we pursue our work with a spirit of stewardship for those who support us, a strong sense of ethos for those who regulate us, and with dedication and commitment for those we serve. It is with great pride and honor that I present to you our 2009-2010 Annual Report.

Sincerely,

A handwritten signature in blue ink, appearing to read 'Alfonso V. Velarde'. The signature is fluid and cursive.

Alfonso V. Velarde
Executive Director



A LETTER FROM THE BOARD PRESIDENT

Dear Stakeholder,

As the 2010 year comes to a close, yours truly would like to express my sincere appreciation and honor in having played a small part of the endeavors of this board. Were there any challenges and obstacles to overcome; most assuredly. However, if I were to give a grade as to the center's achievements and the board's involvement, it would have to be an "A". A few key agency and CCCEP Board accomplishments, leadership, and community involvement really stand out in my mind for 2010.

A great achievement this past year was an increase in the "hands on" participation of the 2010 Board of Directors. The board achieved 100% quorum at all meetings and were very involved in the planning and execution of multiple 30th Year Anniversary events, which is a true mark of selfless dedication and team work. I am especially proud of the overwhelming success of our 30th Anniversary Gala Dinner fundraiser! In this event, the Board's committee chairs were able to pull resources and participation from many members of our community, to include past presidents of the CCCEP board.

The Center, for the first time this year, sponsored and hand-built a float to participate and represent the CCCEP's work in the Annual Christmas Parade in downtown El Paso. Not only was the float itself a success, the parade was enjoyed by all the staff and volunteers that participated.

Of great importance this year was the cooperation and tireless work of our Executive Director, who has achieved an excellent working environment among his staff and board. With his guidance and due diligence as an example, any negative budgetary issues were essentially eliminated!

Worthy of mention, and this certainly ranks high in the survival of the CCCEP, is the phenomenal work and production of the "Discovery Shop," its leaders, and its tireless and truly dedicated volunteers! The Discovery Shop celebrated a major milestone with its 20th Anniversary of non-stop hard work!

Suffice to say, the CCCEP Board of Director's success for 2010 would not, could not have been achieved without the many dedicated community members, staff, its director and the countless hours of meetings, driving all over the city, constant phone calls, emails, etc., etc. What an extraordinary year!

Respectfully submitted,

Eddie Contreras
2010 CCCEP Board President

BOARD OF DIRECTORS



2010 PRESIDENT
EDDIE CONTRERAS
INDEPENDENT INSURANCE



2010 PAST PRESIDENT
ELIZABETH SMITH
BANK OF THE WEST



2010 VICE PRESIDENT
NANCY LANGDON
AFLAC



2010 TREASURER
RICK AGUILAR
CAREFREE HOMES



2010 SECRETARY
MARILYN MUNGERSON
COUNTY ATTORNEY'S OFFICE

2009 - 2010 DIRECTORS

Mary Russell—Founder

Victor Nevarez-Western Refining
Bonnie Guerra-Superior Health Network
Hector Urrutia-Univision KINT 26
Callie Sneddon-Texas Gas
Ellen Turner-The Discovery Shop
Michael Dowdy-Sierra Providence Health
Rodrigo Flores-Capital Bank El Paso

Steven Buraczyk-El Paso Electric Co.
Linda Gonzalez-Concentra
Gerry Howard-Kemp Smith LLC.
Kimberly McHugh-Community Volunteer
Jane Thering-The Discovery Shop
Sandy Nevarez-Regent Broadcasting
Angelica Ramsey-Socorro ISD

PROGRAMS



CHILDREN'S SHELTER AND CIRCLE OF LOVE NURSERY

The Emergency Shelter and Crisis Nursery celebrated its 30th year of providing children with a safe, caring environment that protects and nurtures them during difficult times. First and foremost, the Center represents a safe harbor where a child can heal and receive attention for physical bumps and bruises. Just as important though, our emergency shelter is a doorway to provide the entire family with case management. This provides the opportunity for every child to continue their lives in our Center in the least disruptive way possible while returning to a healthier home environment.

Many of the children we serve have experienced more heartache in their short lives than most adults will in a whole lifetime. Being a child that's beaten, burned, starved, ignored, blamed for every problem, left with a "bad cough," constantly left home alone, told he/she never should have been born, left to scream in a crib around the clock, or even worse leaves devastating effects on these children well into adulthood. Abuse and neglect affects children in every aspect of their lives (mentally, emotionally, socially, and behaviorally).

The Child Crisis Center of El Paso's Emergency Shelter is the only emergency shelter within the greater El Paso area for unaccompanied children ages newborn through 13 years. CCCEP responds to an emergency need for the safety of a child during a crisis situation 24 hours a day, 7 days a week. The majority of the 583 unduplicated children we served in 2010 were Hispanic, extremely low-income, from a single-parent family, and too young to even know they should ask for help. We continue to see an increase in need for our services by children of military families. These children face unique situations of abuse and neglect including mothers suffering from serious depression when their husbands are deployed and incredible anger, aggression, and lack of patience in soldiers who have returned from deployment. Though the circumstances for the abuse and neglect of each child differs, the effects remain the same.

Christmas represents a unique opportunity for our Center to join with the greatest resource of our community, "the kind and generous people," who allow us to fulfill Christmas wishes that would otherwise be lost. Marcos, 6, had been the victim of neglect and abuse by family members in another area of the State. CPS placed Marcos at the Child Crisis Center while awaiting a relative to come for him from Oregon. Marcos' main concern was that Santa Claus would not be able to find him. As Christmas Eve arrived, with the help of CCCEP staff, Marcos was visited by Santa Claus driving up in a Monte Carlo with toys and gifts that left a huge smile on Marcos' face. In 2010, 232 Christmas toy boxes were given out to children who stayed in our emergency shelter.

EMERGENCY SHELTER STATISTICS

ADMISSIONS

	Total Admissions	Total Unduplicated	% Unduplicated
2009	640	508	79%
2010	688	583	84%

ADMISSIONS (UNDUPLICATED/DUPLICATED)

Reason for Admission	2009	%	2010	%
Sexual Abuse	23	4%	9	1%
Physical Abuse	18	3%	26	4%
Family Medical	98	15%	239	35%
Military Training	1	0.2%	4	0.5%
Stress Relief	146	23%	118	17%
Homeless	40	6%	74	11%
Parent Incarceration	35	5%	34	5%
Substance abuse	38	6%	57	8%
Mental Health	1	0.2%	17	3%
Domestic Violence	2	0.3%	22	3%
Neglect	43	7%	37	5%
Abandonment	5	0.8%	14	2%
Family Crisis	190	30%	37	5%
Total	640		688	

INCOME LEVELS

Income Level	2009	2010
Extremely Low	514	578
Low	61	58
Moderate	44	18
Median	16	20
Total	635	674

REFERRAL SOURCES

Referral Source	2009	%	2010	%
Child Protective Services	211	33%	183	33%
Social Services	119	19%	93	16%
Self Referral	221	35%	246	44%
Friend/Relative	49	8%	17	3%
Mental Health	7	1%	1	0%
Schools	24	4%	8	1%
Military	6	0.9%	14	2%
Law Enforcement	1	0.2%	2	0%
Other	2	.3%	8	1%
Total	640		688	

RACE/ETHNICITY (UNDUPLICATED/DUPLICATED)

Race/Ethnicity	2009	%	2010	%
Hispanic	462	72%	470	68%
Anglo/White	92	14%	122	18%
African American	55	9%	55	8%
Other	31	5%	41	6%
Total	640		688	

PLACEMENT SOURCE

Placement by:	2009	%	2010	%
Parent	538	83%	508	74%
Guardian	2	0%	11	2%
Grandparent	26	5%	31	5%
Friend	20	4%	38	6%
CPS-guardianship	6	1%	62	9%
CPS- Referral	2	0%	—	—
Social Service	29	5%	26	4%
Law Enforcement	12	2%	10	2%
Other	5	0.8%	2	0.3%
Total	640		688	

FAMILY EDUCATIONS PROGRAMS AND SERVICES (FEPS)

The Child Crisis Center of El Paso offers education and prevention programs focused on preventing child abuse and neglect. The Family Education and Prevention Department includes the following programs: No Kidding: Straight Talk from Teen Parents program, STEP (Systematic Training for Effective Parenting) program, and a partner program with Aliviane called Abandoned Infants Assistance Family-Outpatient Program to provide in-home parenting services.

No Kidding: Straight Talk from Teen Parents

No Kidding is a unique program that educates young people on the right, responsibilities and realities of teen parenting through interactive presentations conducted by trained peer educators, who are themselves teenage parents. In No Kidding presentations, young fathers and mothers teach what they wish they had been told before they had had their children– from stinky diapers to losing friends, serious legal and financial responsibilities, healthy relationships and some warning signs of unhealthy relationships. No Kidding was adapted from P.A.P.A (Parenting and Paternity Awareness Program) instructional modules which were developed by the Office of Attorney General (OAG). The No Kidding program encourages peer educators in the program who are teen parents to improve their lives by allotting career development opportunities and providing support and resources for them and their families.



During 2009-2010, No Kidding: Straight Talk from Teen Parents El Paso outreached to 6,875 students in 41 middle and high schools in the El Paso area. The program provided a total of 864 presentations and job training for 20 teen parents, of which 90% are Hispanic and between the ages of 16-23. The No Kidding program evaluation reports reveal positive changes in favor of knowledge and attitudes gained by middle and high school students, suggesting that students are increasing knowledge and changing their attitudes on the importance of delaying parenting until they are emotionally and financially stable, and are in a healthy relationship.

The No Kidding: Straight Talk from Teen Parents program is funded by Paso del Norte Health Foundation, Workforce Solutions-Upper Rio Grande and the Department of Justice-Office of Juvenile Justice and Delinquency Prevention.

The STEP -Systematic Training for Effective Parenting Program



The STEP- Systematic Training for Effective Parenting program offers free parenting group classes and in-home services for parents in El Paso County with the ultimate goal of creating a healthier home environment for children by increasing parenting skills. The STEP program is an evidence-based program that provides parents with tips and skill building exercises that reinforces good parenting methods. The program offers Early STEP for parents with children birth through 6 years, STEP for parents of children 6-12 years, STEP Teen for parents of children 13-17

years and STEP Spanish classes.

A few of the topics included in the classes are:

- Understanding yourself and your child
- Listening and talking to your child
- Ages and Stages
- Helping children cooperate
- Beliefs and Feelings
- Discipline
- Encouraging your child and yourself



In 2009-2010, the STEP program outreached to 313 parents with a total number of 808 children. Participants in the program were 90% Hispanic, 95% low income, 68% were from single parent families and over one-third (37%) were teen parents. Eighty percent of participants completed a pre and post survey, and when asked if satisfied with the program, 100% reported either being satisfied or very satisfied.

The STEP-Systematic Training for Effective Parenting was funded by the Paso del Norte Health Foundation, Texas Department of Family and Protective Services-Prevention and Early Intervention, the RGK Foundation, and the Hunt Family Foundation.

Abandoned Infant Assistance-Family Outpatient Program (AIA-FOP)

The AIA-FOP delivers substance abuse treatment, parenting education and counseling sessions for mothers with infants and children, aged birth to five years, who are at risk of abandonment by mothers with substance abuse problems. The CCCEP has partnered with Aliviane and the AIA-FOP to provide in-home parent education classes that are conducted using STEP for children under six years of age. The STEP Curriculum is a total of 8 in-home parenting sessions.



FAMILY SERVICES

Case Management Services

The case management staff of the Child Crisis Center play a critical role in helping families resolve their crisis situation and develop long-term solutions for a healthier family. Case management is provided to both the families with children staying in our Emergency Shelter and to families in need of assistance to prevent the need for emergency shelter services. Case managers work with families and the resources of the El Paso community, such as parenting classes, to create a service plan tailored to meet the needs of the families in a manner which respects their struggle to provide a safe and stable home environment for their children. If the family's children are in the shelter or nursery, the case manager provides ongoing assessment, service planning, and referral to assist in reunifying the parent(s) with the children as soon as possible. At the point of discharge from the shelter or nursery, the case manager creates a discharge/aftercare plan for the family in order to foster their success. The case manager maintains contact with the family post-discharge for 90 days checking to ensure that the discharge/aftercare plan is followed. The plan is modified by the case manager as needed to address the family's needs as they gain increasing stability.

Service to Military Families and Children

In January of 2010, a young spouse of a soldier deployed to Afghanistan called the Child Crisis Center requesting assistance. The young woman had recently had a miscarriage and was suffering complications. Without any family to take care of her 2-year old and 8-month old children, she could not admit herself into a hospital to receive the appropriate treatment. With referral from her OB/GYN, the young lady admitted her children into CCCEP and received the medical treatment she required. During the period of care, the Center's case manager identified many areas of assistance that the young lady could take advantage of. The case manager assisted the woman in obtaining WIC benefits, enroll her children in the Ft Bliss Child Development Center, enroll in Ft. Bliss childcare services, and even assisted the woman in lowering the interest rate on her husband's new vehicle. By calling the Child Crisis Center, this young lady was connected to many benefits and services that she otherwise would never have known of.



Service to Military Families and Children cont.

The Child Crisis Center of El Paso continues to provide extensive services to military families and their children. In the past two years, the Center has successfully drawn funding from various funding sources to pay for service to military families. Military services began with TRIAD funding in 2007 from the Permian Basin Area Foundation.

In 2009 and 2010, the San Antonio Area Foundation and the United Way of El Paso provided funding for the Center to Continue its TRIAD services; and most recently, the Texas Veterans Commission Fund provided funding to assist all military families and veterans with child prevention services. The mission of the Child Crisis Center's Military Family Programs is to assist American military families of all branches and veteran status who have unmet needs. These needs can range from a medical emergency of a parent or child, respite care, death of a family member, injury, physical or mental detriment, financial hardship, lack of family care plan, field training, or any other crisis situation that arises within their lives. We provide free shelter services and comprehensive case management for every child and their family. Our military members have made an honorable sacrifice for our country, and we, the Child Crisis Center, are here in appreciation of these families to ensure their success and promote their stability.

TRIAD funded services are exclusively for military families who have one or both parents deployed to the Iraq/Afghanistan War. Their deployment may be current or prior served. **All** service members and their families regardless of deployment are welcome and will be served at no charge by the Child Crisis Center of El Paso. With funding from the Texas Veteran's Commission Fund, the Center can ensure that military families, regardless of combat status, will be provided the same high level of shelter care and case management as when service delivery commenced with TRIAD funding.

Year	Number of Military Children Served
2007	29
2008	94
2009	130
2010	128

COMMUNITY RESOURCE CENTER

The Child Crisis Center of El Paso has always opened its doors to the community to offer a variety of resources to families in need. These resources are made available through the generous donations provided by many local businesses and loyal community members.

The Child Crisis Center provides assistance to families who are referred by another agency, friend, family member, or have used CCCEP services. The resources that are available include diaper packages, formula cans, clothing sets, food baskets, toiletry sets, and vouchers to the Discovery Shop. Along with these basic items, the center assists families with seasonal items that include Easter baskets, school supplies, Thanksgiving turkey baskets and Christmas gifts for less fortunate children. With ESGP Homeless prevention funds the Child Crisis Center is able assist with a onetime payment for short term utility assistance of up to \$143.50, late rent payments of \$500.00, or first month's rent of \$500.00.

During the week of Christmas 2009, the Child Crisis Center gave assistance to a father whose drug addicted wife had abandoned him and their four children. Dad was about to start a job in January and was facing eviction if he did not pay for his rent. The Center assisted the family with \$500.00 for rent, a food basket, Christmas toys for the children, and referrals to other agencies.

DISTRIBUTION OF COMMUNITY RESOURCES				
	2009 Avg./ year	Estimated Value	2010 Avg/year	Estimated Value
Diaper Packages	252	\$2016	180	\$1200
Formula Cans	36	\$216	60	\$300
Clothing sets	168	\$4200	30	\$750
Food Baskets	72	\$1080	90	\$1350
Toiletries	96	\$1444	20	\$300
Discovery Vouchers	144	\$3456	170	\$4080
School Supplies	95	\$4275	159	\$7155
Thanksgiving Food	125	\$7500	196	\$4900
Christmas Packages	250	\$37500	349	\$52350
Estimated Value		\$61683		\$72385

Staffing and Human Resources



Working at the Child Crisis Center of El Paso is a challenging adventure. The work performed by the professionals who make up the Child Crisis Center staff is demanding because of the very nature of working with children and families. Staff members must become involved with the crisis and trauma that the children and families they work with are experiencing. Often, our staff members are the only trusted people a child or family member has at the time of their crisis, so the customer service a family receives from our staff has a long lasting impact. Licensing regulations, grant obligations and budget considerations all impact our staff's ability to perform, but because we are professionals in every sense of the word, they are able to perform their jobs at the greatest levels. Stress can be high in this line of work, but our staff enjoy a work environment that lends itself to a career filled with rewards, activities that help take the edge off of the daily stress and a team attitude that ensures that we are there for one another.

The Department of Human Resources is responsible for managing all staffing requirements, payroll, benefits coordination, government regulations, hiring, monitoring performance appraisals, records maintenance and multiple other Human Resources tasks. The office is staffed by a Human Resources Manager who is also responsible for the management of all facilities personnel and concerns. In 2010, the Center had 43 employees and we continue to be compliant with all federal labor laws and local and state employment regulations.

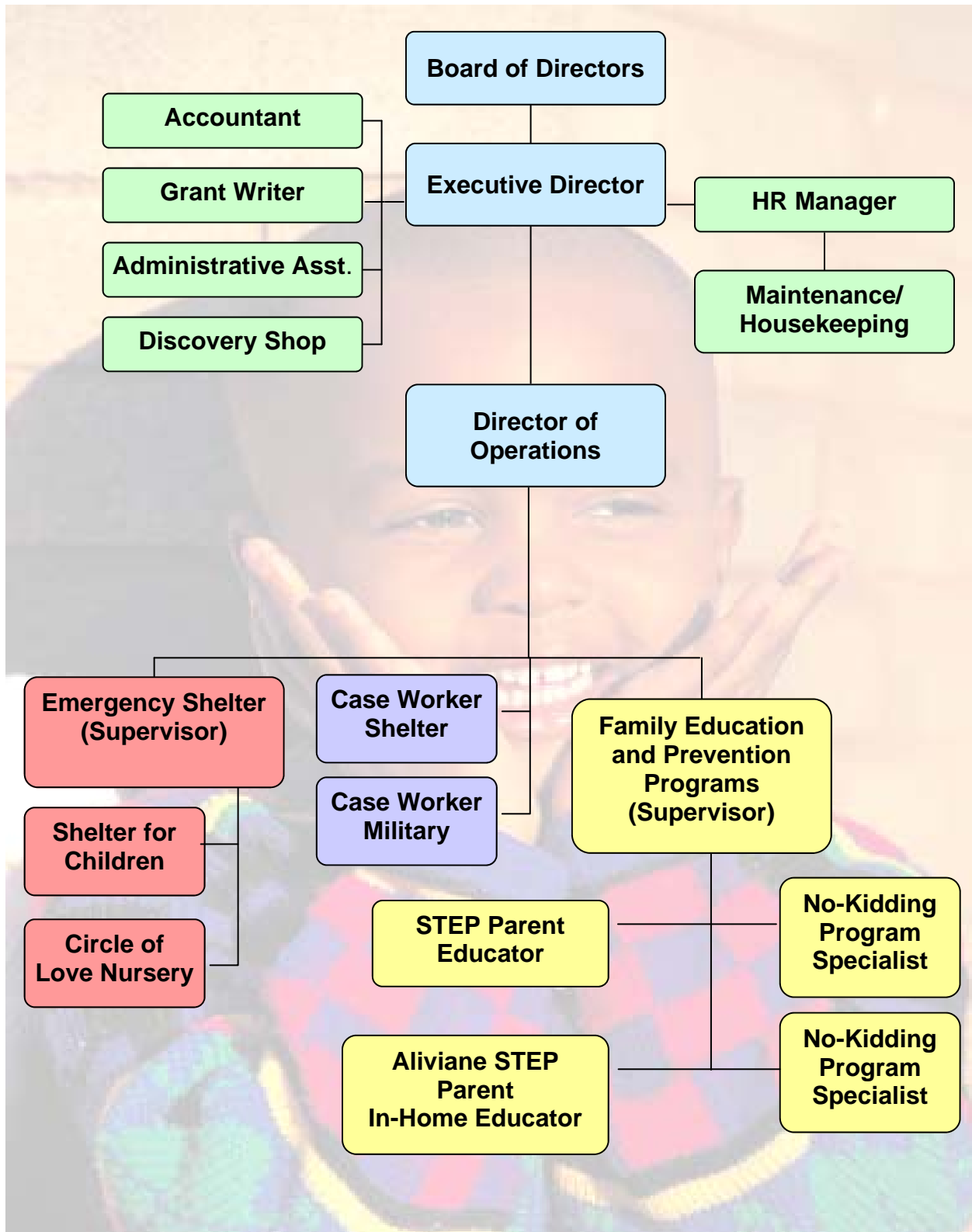
2010 Staffing by Department	
Shelter	27
FEPS	5
Family Services	3
Maintenance	2
Administration	5
Discovery Shop	1
Total	43

2010 New Hires by Department	
Shelter	4
FEPS	1
Family Services	0
Maintenance	0
Administration	2
Discovery Shop	0
Total	7

2010 Total Separations	
Resignations	2
Lay-Off	2
Termination	1

2010 Total Training Hours	
Mandatory In-service	516
Staff Training	200

CHILD CRISIS CENTER OF EL PASO ORGANIZATIONAL CHART



Revised 02/11/11

Child Crisis Center of El Paso, Inc

Two-Year Comparative Income Statement

Financial statements in
U.S. dollars

Income

	[2010]	[2009]	Increase / (Decrease)	Percent Change
Federal Grants	312,317	200,623	111,694	55.67%
State Income	234,735	57,427	177,308	308.75%
Foundation Grants	585,481	804,412	(218,931)	-27.22%
Direct Public Support	94,288	78,327	15,962	20.38%
United Way Support	164,113	162,792	1,321	0.81%
Discovery Shop Income	319,366	344,701	(25,335)	-7.35%
Fundraising Income	114,883	68,575	46,308	67.53%
Interest Income	1,452	367	1,085	295.97%
In-Kind Contributions	47,065	4,840	42,225	872.45%
Miscellaneous Revenue	2,980	35,877	(32,897)	-91.69%
Net Sales	1,876,680	1,757,939	118,741	6.75%
Gross Profit (Loss)	1,876,680	1,757,939	118,741	6.75%

Expenses

Grant and Program Related Expenses	24,641	57,686	(33,045)	-57.28%
Salaries & Wages	975,874	956,108	19,766	2.07%
Payroll Taxes	87,718	79,449	8,269	10.41%
Fringe Benefits	62,817	77,683	(14,866)	-19.14%
Contract Labor	212,268	193,035	19,233	9.96%
Operational Expenses	88,264	105,340	(17,076)	-16.21%
Facilities & Equipment	144,545	138,100	6,445	4.67%
Depreciation	44,989	49,808	(4,819)	-9.68%
Travel	35,792	34,404	1,388	4.04%
Other Expenses	44,917	43,631	1,286	2.95%
Total Expenses	1,721,825	1,735,244	(13,419)	-0.77%

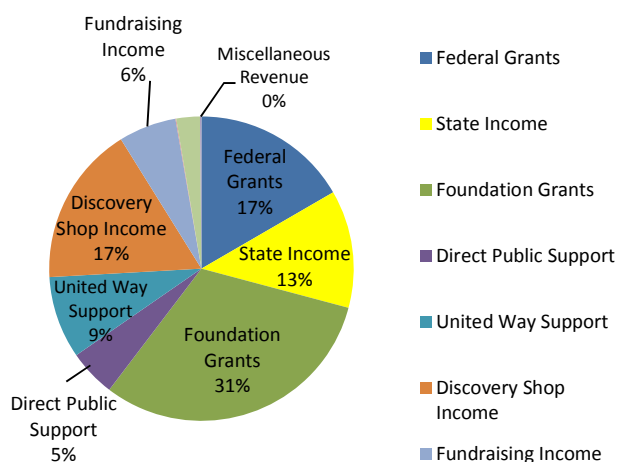
Net Operating Income

	154,855	22,695	132,160	582.34%
--	---------	--------	---------	---------

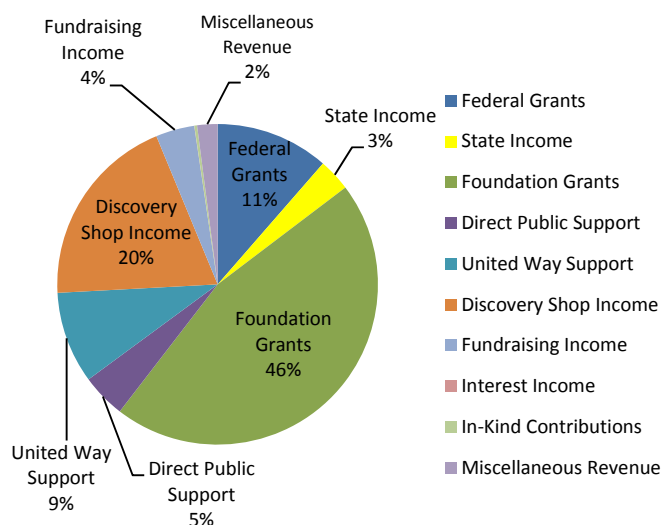
Net Income (Loss)

	154,855	22,695	132,160	582.34%
--	---------	--------	---------	---------

2010 Funding Sources



2009 Funding Sources



Child Crisis Center of El Paso, Inc. Comparative Balance Sheets

	2010	2009	Increase / (Decrease)	Percent Change
Assets				
Current assets:				
Cash	480,593	276,085	204,507.82	42.55%
Accounts receivable	33,068	56,044	(22,976)	-69.48%
Unconditional Promise to Give	28,500	28,500	-	0.00%
Inventories	28,667	28,667	-	0.00%
Pre-paid expenses	9,310	9,310	-	0.00%
Other	-	-	-	
Total current assets	580,138	398,606	181,532	-26.93%
Fixed assets:				
Furniture and Equipment	193,060	186,185	6,875	3.56%
Buildings	1,446,710	1,446,710	-	0.00%
Land	44,458	44,458	-	0.00%
Vehicles	28,298	28,298	-	0.00%
Less accumulated depreciation	(559,253)	(514,264)	(44,989)	8.04%
Net fixed assets	1,153,273	1,191,387	(38,114)	11.61%
Total assets	1,733,411	1,589,993	143,418	-15.32%
Liabilities and owner's equity				
Current liabilities:				
Accounts payable	12,927	13,583	(656)	-5.08%
Foundation Loans	53,616	100,624	(47,008)	-87.68%
Prepaid Insurance (Financed)	9,310	9,310	-	0.00%
Payroll Liabilities	3,263	2,474	788	24.16%
Accrued payroll	58,818	46,365	12,453	21.17%
Total current liabilities	137,934	172,357	(34,423)	-47.42%
Long-term liabilities				
Forgivable Loan	396,791	396,791	-	0.00%
Total long-term liabilities	396,791	396,791	-	0.00%
Equity				
Temp. Restricted Net Assets	153,100	130,115	22,986	15.01%
Unrestricted Net Assets	890,731	868,149	22,582	2.54%
Net Income	154,855	22,582	132,273	85.42%
Total owner's equity	1,198,686	1,020,845	177,841	102.97%
Total liabilities and equity	1,733,411	1,589,993	143,418	55.54%

Fund Development

30th Anniversary Campaign

Our community support was stronger than ever this year. The Child Crisis Center of El Paso (CCCEP) celebrated our 30th Anniversary of preventing child abuse and neglect. A total of \$113,312 was raised through the campaign. We enjoyed three major successful fundraising events, and attained new funding sources for our Emergency Shelter, No Kidding, and Parenting programs. A negative act of vandalism at our Center was turned into positive community support, and several community groups have donated and raised funds for our Center throughout the year.

Our 9th Annual Memorial Golf Tournament began on a cloudy, cold morning, but everyone came together to enjoy a day of golf and ended the evening with a warm celebration of the children we help. Our next anniversary event got everyone dressed up for our Gala dinner "An Evening for the Love of Children." Attendees savored a delicious meal, and then contemplated the seriousness of the lasting effects of child abuse while listening to best-selling author David Peltzer. Our Annual Trot for Tots Race rounded up our events with excitement and great community support. The race was held on 9/11 in remembrance of the tragedy that occurred on that day and to honor our local firefighters, police force, and military members.

The community contributed extra goods and services this year following multiple thefts at our Center. Even though only a few bikes were stolen, over 150 bikes were donated, along with thousands of dollars of landscaping services to secure the back of our building. The overwhelming community support we received showed how important the Center's programs are to the community we serve.

Grant Development

Grant development continues to be a primary source of funding for the Center. Because of the 2009 recession, we found that many private foundations either cut back funding or did not provide any grants at all. As a result, we pursued government dollars to a greater extent and our strategy proved successful. We received Victims of Crime Act (VOCA) funding from Office of the Governor, Texas Emergency Solutions Grant Program funding from the Texas Department of Health and Community Services, were funded with Housing and Urban Development Funding under the HPRP program, Department of Family and Protective Services provided Texas Families Together and Safe funding for parenting classes, and the Texas Veterans Commission is supporting Shelter, Case Management and Outreach for current and past military families.



Despite difficult economic times, several private foundations provided financial support for the Center. Two of the foundations that provided greater support are the San Antonio Area Foundation who provided TRIAD funding to support military families and the Wolslager Foundation who provided general shelter operating support.

The United Way of El Paso County continues to support the Child Crisis Center through multiple programs. We are proud that we remain among the highest funded United Way agencies in El Paso. United Way provides funding through two Allocation Grants, Designated funds, and grant funding that originates with the Permian Basin Area Foundation.

In total, the Center succeeded in receiving over \$769,627 in funding from various Government programs and private foundation grants. This amount of grant surpasses any year in recent history and is an accomplishment considering the hard economic conditions that have affected funding agencies. A list of awarded grants are as follows:

2010 Awarded Grants (partial list, please see following page for complete list)			
Grant	Amount	Grant	Amount
Government Funding			
CDBG (City)	\$29,954	ESG (City)	\$31,502
ESGP (Texas)	\$52,916	EFSG (Federal)	\$20,000
VOCA (Texas)	\$62,552	Texas Vet. Commission	\$313,983
JWDP (Federal)	\$99,975		
Private Foundation and Other			
Our Fathers Foundation	\$2,500	Wolslager Foundation	\$50,000
United Way/PBAF-TRIAD	\$20,000	NY Life Foundation	\$5,000
TJX Foundation	\$10,000	Union Pacific Foundation	\$2,500
Hightower Foundation	\$4,000	El Paso Community Fdn.	\$4,500
SAAF TRIAD (Renewal)	\$93,275	RGK Foundation	\$20,000
OCSA	\$2,000	Hunt Family Foundation	\$7,500
El Paso Community Fdn	\$10,000	Wells Fargo Foundation	\$5,000

Discovery Shop

The Discovery Shop is the Child Crisis Center's thrift store located at 4747 Hondo Pass in the Bradley Shopping Center. The Child Crisis Center, like most other non-profit organizations, must be resourceful in generating operating revenues. The Discovery Shop has been a model business since its inception in 1989 in that it generates great revenues at very low cost. The Discovery Shop uses volunteers as its primary staffing. Costs associated with operating the store are limited to utilities, rent, and occasional maintenance. Volunteers reduce employee costs and



inventory is 100% donated by our very generous community. As a result, approximately 62% of the Discovery Shop's total revenue is contributed to the Center for operations, accounting for approximately 17% of the CCCEP's total revenue. It is the only truly sustainable source of unrestricted funding available to the Center.

For shoppers looking for bargains, antiques or unique purchases, the Discovery Shop is an ideal thrift store and well worth the drive. Bargain hunters can find very good and slightly used clothing

Discovery Shop 2010 Totals	
Sales	319,366
Contribution to Center	197,300
Volunteer Hours	33,408

and apparel at a fraction of the cost of what the clothing costs at a department store. Common items include jeans, shirts, dresses and an enormous array of other apparel. Each trip to the Discovery Shop offers exciting new experiences when someone visits the store. Antiques, furniture, fine china, silverware, and jewelry are often found at the store at affordable prices.

The shop accepts donations of items in good condition including clothing, electronics, furniture, dishware, books, videos, and any merchandise that has resale value. Fall and spring cleaning are ideal times to donate, but any time is good. Your donation will support the children cared for by the Child Crisis Center and is tax deductible. To donate, you can take your items to the Discovery Shop, to the Child Crisis Center at 2100 N. Stevens, or you can call 757-0506 to arrange a pick up of large or bulky items.

2010 Child Crisis Center of El Paso Supporters

30th Anniversary Sponsors

Bank of the West
Helen of Troy
Western Refining
Planet Fitness

Foundation Grants

AO Smith Foundation
Bank of the West-Casey Foundation
Walter H. Hightower Foundation (EPCF)
El Paso Community Foundation
The Cardwell Foundation (EPCF)
Leon Apteckar Endowment Fund (EPCF)
Gabriela Salazar (EPCF)
Robert D. Earp (EPCF)
Ft. Bliss Officers', Civilians' and Spouses Association
Hunt Family Foundation
Morgan Stanley
New York Life Foundation
Oneok Foundation
Paso Del Norte Health Foundation
RGK Foundation

Foundation Grants cont.

San Antonio Area Foundation
Shiloff Family Foundation
TJX Foundation
Union Pacific Foundation
United Way of El Paso County
Wal-Mart Foundation
Wells Fargo Foundation
Wolslager Foundation
Yvonne Richardson Memorial Foundation

Government Grants

Community Development Block Grant-ESG
Community Development Block Grant-Social Services
Criminal Justice Division-VOCA
Emergency Solutions Grant Program
Homeless Housing and Services Program
Juvenile Workforce Development Program
National School Lunch Program
Texas Families: Together and Safe
TX Veterans Commission Fund
Upper Rio Grande Workforce

2010 Child Crisis Center of El Paso Supporters cont.

While the Child Crisis Center of El Paso has been successful with its fundraising and grant development efforts, we could not have done our work without the support of our individual and corporate sponsors and supporters. We thank everyone for your support (and regretfully, there will always be someone we missed, we apologize in advance):

Corporate Sponsors and Contributors

A Jimenez Insurance Agency
ADPFCO
AFLAC
Albertson's
Alliance Riggers & Construction
Alon Financial Services
Applebee's
Banes General Contractor
Bank of America
Bank of the West
Barnett, Harley Davidson
Carefree Homes
Centene Management Co
Century 21
Communications Workers
Compass Bank
Corrosion Control Co
Crystal Office Services & Organizing, LLC
Cummins Rocky Mountain
Delaney's Steak House
Desert View Realty
DPMS
Early Times of EP
El Paso Corporation
El Paso Electric Co
El Paso Hotel/Motel Association
Elegant Penguin
EP Cardiology Association
EP Independent Auto Dealers
EPT Land Assets LP
Fasteners & Safety Inc
Federal Protective Services
Forrest Tire Co
Freeport-McMoRan
GECU
Global Perspective International
Grammie's Day Care
GYMG
Harborage Insurance Brokers
HCA (Del Sol Medical Center)
Hear on Earth
Helen of Troy
Her Gym
Hershey's Dental Care
HHH Ventures Inc
Honeywell
Hope & Anchor
Hoy Fox Partners
Hunt Communities
Indoor Sportsplex
Intuit Payroll Services
Irrigation and Landscape
Johnson Jewelers
Kemp Smith
Kipps Cheesesteaks
Kohl's
KPMG
Lutrell Trust
Mac Transport
Macy's
Magnolia Court #28
Morgan Stanley
Mounce etc
Mustang Express
New Hope Lutheran
NYL
Paso Del Norte Gun
Paso Prop (MIMCO)
Payless Shoe Source
Pinata Publishing
Price's Creameries
Race Adventures
Rincon Law Group
Rocky Mountain Mortgage
Rudolph Chevrolet, Honda, Mazda
Russell Transporting Inc
Sierra Machinery
Smith-Johnston Plumbing
Southeastern Michigan
Spectrum Imaging
Sun City Media
Sunland Park Racetrack
Superior Health Plan
Supreme Laundry
Target
Texas Gas Co
Texas Mutual
The Laster Group
Three C's Construction
Three Legged Monkey
Townsquare Media
Tropicana Homes
UBH
UPS
UTEP
Walgreens
Wal-Mart
Western Dedicated
Western Refining
Westside Trucks
Whataburger Restaurants

Associations, Civic and Educational Contributors

4/6th Infantry
American Legion Unit 832
Anamarc College
ATAMIR-WSMR
Bel Air Deca
Ben Eloy International
Black Widows
Border Toaster Club
Buffalo Soldiers
Cathedral School
Club Blue
College Academic Support Programs
Consolidated Chaplains Fund
El Paso Viking Club
Franklin High School
German Air Force
German School-Ft Bliss
Girl Scout Troop #398
Golden Girls LLC
Illinois Spring Break Women
Jr Woman's Club
Kemp Smith
Montwood Middle
Mt Franklin Kiwanis
Northeast Rotary Club
Pan American Golf Association
Park University
Paso Del Norte Fun Collectors
Peace Lutheran Church
Region 19
Scotsdale Baptist Church
Skyline Lions Club
St Clements Parish School
St Raphael School
UTEP
UTEP-Minerpalooza
Valley View Middle School
VFW Post 8550
Vista College-Medical Club
Westside Welcome Club
XI Delta Lambda/Muriz
Ysleta ATPE
Ysleta Chapter #991
Zion Lutheran Church

2010 Child Crisis Center of El Paso Supporters cont.

United Way Designations

AT&T Giving Campaign
Allstate Giving Campaign
Boeing Giving Campaign
Truist Giving Campaign
United Way of Southwestern MI
United Way of the Bluegrass
UPS Giving Campaign
Wells Fargo Giving Campaign
Morgan Stanley
Bank of America

Individuals

Adrian L. Astiazaram
Adrienne Nevarez
Aguilera & Flores
Albina Harshberger
Alejandro Cabrera
Alfonso Velarde
Alfredo Chavez
Alfredo Gutierrez
Alice A Wagener
Alicia D Saenz
Allison E Garcia
Amanda Lebarre
Amelia Miranda
Ana I Sanchez
Ana Luisa Padilla
Ana M. Viesca
Ana Torres
Analilia Miramontes
Angela Cruz
Angelica Holguin
Angelina Cordero
Angie Burns
Anna D Fuller
Annabelle Johnson
Annah D. Knight
Anne Alvarez
Anne F Spier
Annette Miranda
Annette Peebles
Antonio Munoz, Jr
Antonio Rodriguez
Araceli Bernal
Armida T Spade
Arturo Castaneda
Arturo De Haro
Ashley Ehler
Audrey Cordova
Autumn Carter
B Kehr
B. Beegle
Barbara Hall
Beckie Maya
Bent Family
Berenice Heredia
Bertha Madrid
Betty L. Buttyan
Bill Barry
Bill Spears
Brenda L. McBride
Brenda Tate

Brisa S. Brown
Bufe C Morrison
C Aleman
C Brucker
Camille D. Calderon
Carlos Escobar
Carlos Rueda
Carly & Paige Pearson
Carmen L. Aguirre
Carmen N Diaz De Leon
Carmen Sanchez
Carolina Pena
Caroline E. Brownlow
Carolyn Young
Catherine L. Vowell
Catherine Oyston
Cathey Joseph
Cecy de la O
Celeste S. Mills
Celia Hernandez
Charlotte Quintana
Chester C Cheng
Christine A. Tunnell
Christine L. Meyer
Cindy Ortega
Clara A. Miles
Clara L. Buckland
Claudia Guerrero
Claudia Heras
Claudia L. Skimmer
Claudia L. Skimmin
Claudia Y. Maldonado
Crystal L Hulett
Crystal Mendoza
Cynthia Aguilar
Cynthia Rios
Damaris Fernandez
Daniel Mascorro
Danytza G. Wootten
Darcy E. Cleaver
Dave Pelzer
David G. Fraire
David Hernandez
David Ornelas
Dean Inniss
Deanna Nasser
Debbie Cordova
Deborah E. Brown
Deborah F. Grammer
Deborah Smith
Denisse H. Villarreal
Diane L. Valachovis
Diane Tinkoff
Dixie R. Wicker
Dolores Navarro
Dolores R Vasquez
Dominic Pichardo
Donald A Tinkoff
Donna N. Gray
Dora Hernandez
Dozy Rodriguez
Dr. and Mrs. Randall C. Burt
Durwood Spencer

Individuals cont.

Dwight Aarons
Edgar I Montalvo
Edna L. Reyes
Edward Jimenez
Eileen Huereque
Elisabeth A Wiggins
Elizabeth Guerrero
Elizabeth Jacquez
Elizabeth Middler-Flores
Elizabeth Smith
Ellen Shumate
Ellen Turner
Elsa G. Olivera
Elva Malooly
Elvira M Aguilar
Elvira Vasquez
Elza & Angelica Trillo
Emerson Smith
Emma Urquidi
Ericka Guereca
Ernie Fiocca
Estela Nanez
Eva Santa Cruz
Fan Geller
Felipe Romo
Francisco Nunez
Frank Andrews
Frank Navarrette
Freeman Johnston
Gabriel F. Flores
Gabriel Ramirez
Gabriela Gamboa
Geo. J. Marquez
George Hernandez
Gerald Howard
Gerardo Saucedo
Gilbert Sanchez
Gina Cuellar-Sanchez
Glenn Shios
Gloria Betancourt
Gloria Dick
Gloria Duran
Gloria M. Loera
Grace B Cofer
Greg W. Keable
Gregoria F. Valenzuela
Guadalupe Gonzalez
Gurighe Garons
H Robt Thering
Hilda Lewels
Howard Bolick
Irene A. Armendariz
Irma Quintana
Isela Escobedo
J Pattee
J S Mills
J. Kirk Robison
Jaime Delgadillo
James L. Schichtl
James Major
Jamie M. Urquidi
Jane W. Pyron
Janelle Foust

2010 Child Crisis Center of El Paso Supporters cont.

Individuals cont.

Janet E. Burgers	Leticia Garcia	Mitzi Shannon	Rosemary Ontiveros
Janet Furney	Leticia Garibay	Monica Leon	Roy Marszycki
Janice Chapman	Lillian M Silverman	Monica Narvaez	Ruben Cadena
Javier Ramirez	Lillian Silberman	Mrs. W Childress	Rudy Sierra
Jean A. Clark	Linda C Alarcon	Nancy Love	Ruth Z. Veloz
Jean H Allen	Linda Gerardo	Nancy Monty	S Burazcyk
Jean M Senutor	Linda I Kolstad	Nancy Sosa	Sal Armendariz
Jeannette M Kelleher	Linda M Zapanta	Nathan & O'Neill	Salomon Molina
Jeannie Bennett	Linda Milam	Nativiad Aranda	Salwyn Parker
Jeff Hubley	Linda Wiseman	Nick Delgado	Sandra Estrada
Jennifer A Chavez	Lisa G. Hernandez	Nong H Le	Sandra Hoover
Jennifer Adams	Lisa Gutierrez	Nora Munoz	Sandra Hoover
Jerri L Boone	Lluvia N. Flores	Nora Peebles	Sandra Osuna
Jesus M. Marrufo	Lorena Ortiz	Norman Laurence	Sandra P Rodriguez
Jim Darnell	Loretta Buchanan	Octavio Navarro	Sarah Acosta
Jimena Centelles	Lourdes Rosales	Oscar Alderete	Sergio Chavez
Jimmy Janacek	Lupe Cuellar	Oscar Chavez	Sergio Coronado
Jimmy W. Janacek	Luz Sandoval	Pamela Magee	Stacey O. Smith
Jo Anne Bernal	M Fushille MD	Pat Miller	Stanley Stack
Joan M. Demiter	Manuel Viescas	Patricia A Novelo	Stephan Ramirez
Joan S Mills	Marcela Gil	Patricia Davenport	Stephanie Caviness
Joanna Shifflett	Marcelo Rosales	Patricia Gardea	Stephanie R Sutherland
Joanne Diaz	Margaret M. Kolesar	Patricia Hernandez	Stephen Eckles
Joe Burgess	Margaret Watter	Patricia Lopez	Stephen Larsen
John M Edwards Jr	Maria Acevedo	Patricia Q. McNicholas	Steven C. James
John March	Maria Acosta	Paula Alvarez	Sue Jane Woo
John March	Maria C Aguilar	Phil Cordova	Suky Lujan
John Porter, Jr	Maria E Watts	Philip A. Becker	Susana Lindsey
Jorge Ibarra	Maria E. Tuten	Phoebe Villarreal	Sylvia I Manriquez
Jose A. Alicea	Maria Gloria	R D Wiles	Sylvia Ochoa
Jose A. Granillo	Maria L. Escobar	Rachelle Williams	Sylvia Valverde
Jose H. Santiago	Maria Molina	Rafael M. Pena	T.C. and P.R. Miller
Jose O. Lujan	Maria T Meza	Raja O Tuttle	Tammie Muriel
Jose R. Toriano	Maria T. Vicuna	Ramon E Caro	Teresa L. Todd
Joseph P Hammond	Maribel Castello	Randall C Burt	Terry D Gudz
Joseph Russell	Marilyn Mungerson	Rebecca Duran	Terry Vicuna
Josie Goeldner	Mario Gates	Rebecca L McKensie	Thomas A Hernandez
Judith A Brown	Mario Martinez	Rebecca Rojas	Thomas Alost
Julietta J Del Valle	Mario R Diaz	Rebecca Taylor	Tim Sarabia
June Shaffer	Marion F. Miles	Refugio A Jimenez	Tony Pallanez
Kaleena Valles	Mark Aguilar	Ricardo Acosta	Tracey Murillo
Karen Wade	Martha A Collins	Richard Chacon	Travis & Annabelle Johnson
Karla Orona	Martha Cubillos	Richard Cobos	Trini Rosales
Kathleen Kissam	Martha Hood and Will Jewell	Rick Aguilar	Trinidad Ortiz
Kathleen Menchey	Martha Summerford	Rick Mora	Val Eppli
Kathryn A. Barton	Mary Joyce Whiteside	Robert A Hamilton	Valentina Garcia-Bracho
Kathryn Sanchez	Mary Overton	Robert Cleaver	Valerie Samaniego
Kathy Conway	Mary Russell	Robert Duran	Vanessa O Diaz
Kathy Stein	Matilde Miranda	Robert L Davidson	Velia G. Rodriguez
Kay Jenkins	Mayany Delgado	Robert L Dennis	Veronica Dominguez
Kenneth M Hemley	Meike Grisman	Robert M Dowdy	Veronica Flaherty
Kevin Shannon	Mel Adams	Robert M Zamora	Veronica Zavala
Kimberly Garcia	Melissa Lagunas	Robert Simental	Veronica Zesati
Kimberly McHugh	Melissa Marquez	Robert W Bonaventure	Victor Duran
Kimmie Caldwell	Melissa Meraz	Roberto Diaz	Vinita Shaw
Kristin Bannon	Mercedes Bauerkemper	Roberto Rodriguez	Virginia Amaya
Kristy Seckler	Merle Roberts	Rocio Borjon	Wayne Pritchard
Larry A. Kunard	Michael Kirk	Roger G Martinez	Wendy A Booth
Larry L. Patton	Michele Y Bartlett	Roger H Turner	William D Nabours
Laura A. Rosales	Michelle Cromer	Roland Brown	William D. Spears
Laura Carrillo	Michelle Gravalos	Romelia Escarcega	William Zelinski
Laura Cooksey	Michelle Lemke	Ronald L Graham	Yenisey Porras
Laura Prada	Michelle V Martinez	Rosa A Quintela	Yolanda A Cornejo
Laura Ramirez	Miguel Escamilla	Rosa M Gonzalez	Yolanda S Villescascas
Laurie Burgess	Miguel Nemeth	Rosa M Morales	Yvette Elenes
Lee Connell	Mike Dipp, Jr	Rose M. Acevedo	Zulma Holguin



2100 N. Stevens Street, El Paso, TX 79930
P 915-562-7955 F 915-562-2524
www.childcrisiselp.org